



14 Lintons Lane

, Epsom, KT17 1DD

£2,400 Per Month



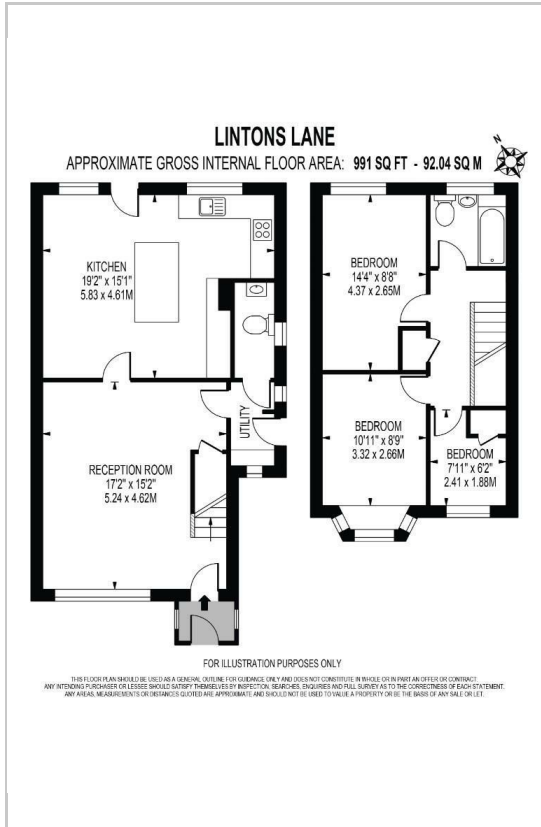
****Fully Refurbished**** Thomas & May is delighted to bring to the rental market this fully refurbished three bedroom property located within 0.5 miles of both Epsom Town centre and mainline station. The property benefits from an open plan kitchen / dining room with a breakfast bar and a newly fitted kitchen with new appliances including a dishwasher, the ground floor also offers a large lounge, downstairs cloakroom and utility room. First floor offers three bedrooms and a brand new bathroom. The whole house has new flooring and has been rewired, new plumbing and a new boiler. Private garden. On street permit parking available.



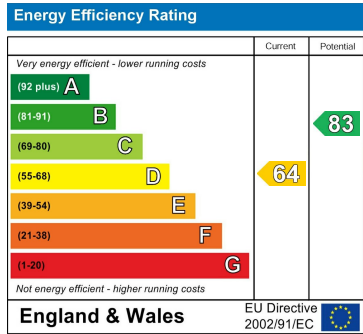
Area Map



Floor Plans



Energy Efficiency Graph



These particulars, whilst believed to be accurate are set out as a general outline only for guidance and do not constitute any part of an offer or contract. Intending purchasers should not rely on them as statements of representation of fact, but must satisfy themselves by inspection or otherwise as to their accuracy. No person in this firms employment has the authority to make or give any representation or warranty in respect of the property.